

# Snells Beach to Warkworth Walkway/Cycleway

# Objectives

- ▶ Allow the public to experience the natural environment of the Mahurangi River.
- ▶ Create a trail for shared use for walking and cycling remote from highways.
- ▶ Allow commuting from Snells Beach to Warkworth.
- ▶ Create shorter walking and cycling trails and loop walks that can be completed within an hour or two.
- ▶ Provide for future connectivity to Matakana and beyond and, in time, create an internationally recognised cycle trail.
- ▶ Interact with future boat services on the river so that sections can be walked one way.

# Progress to date

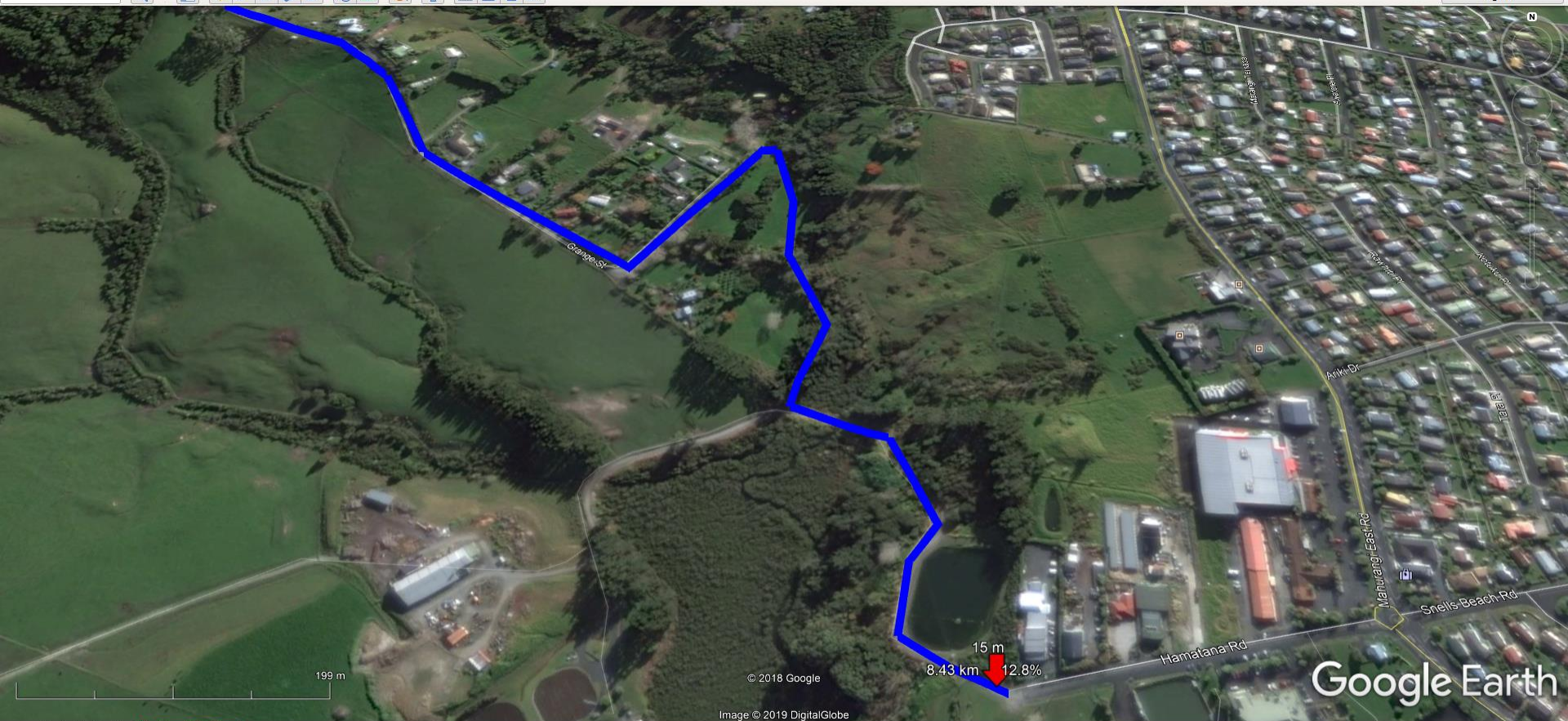
- ▶ FRAME reports 2009 and 2016
- ▶ Recognised as a priority in RLB Greenways Plan
- ▶ Landowners supportive
- ▶ Construction Feasibility Report Prepared
- ▶ Executive Summary
- ▶ Route checked on site.

# Next Stage

- ▶ Public Consultation
- ▶ Finalise Planning inputs
- ▶ Planning and Consent applications







Graph: Min, Avg, Max: Elevation: 0, 29, 88 m

Range Totals: Distance: 8.43 km | Elev Gain/Loss: 269 m -270 m | Max Slope: 21.7% -33.3% | Avg Slope: 5.4% -5.9%







Graph: Min, Avg, Max: Elevation: 0, 29, 88 m

Range Totals: Distance: 8.43 km | Elev Gain/Loss: 269 m -270 m | Max Slope: 21.7% -33.3% | Avg Slope: 5.4% -5.9%







218 m

© 2018 Google

Image © 2019 DigitalGlobe

Google Earth

Graph: Min, Avg, Max: Elevation: 0, 29, 88 m

Range Totals: Distance: 8.43 km | Elev Gain/Loss: 269 m, -270 m | Max Slope: 21.7%, -33.3% | Avg Slope: 5.4%, -5.9%





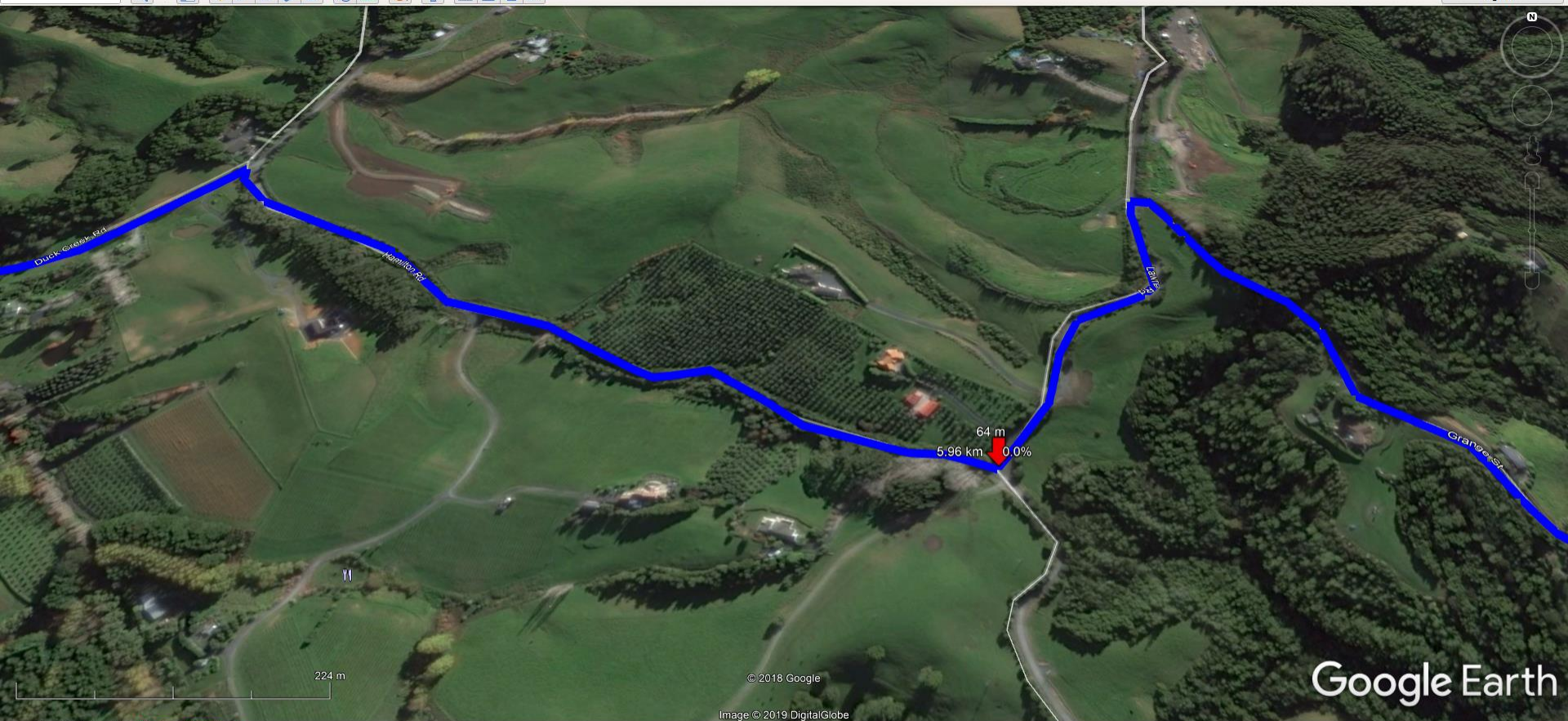


Graph: Min, Avg, Max: Elevation: 0, 29, 88 m

Range Totals: Distance: 8.43 km | Elev Gain/Loss: 269 m, -270 m | Max Slope: 21.7%, -33.3% | Avg Slope: 5.4%, -5.9%







© 2018 Google

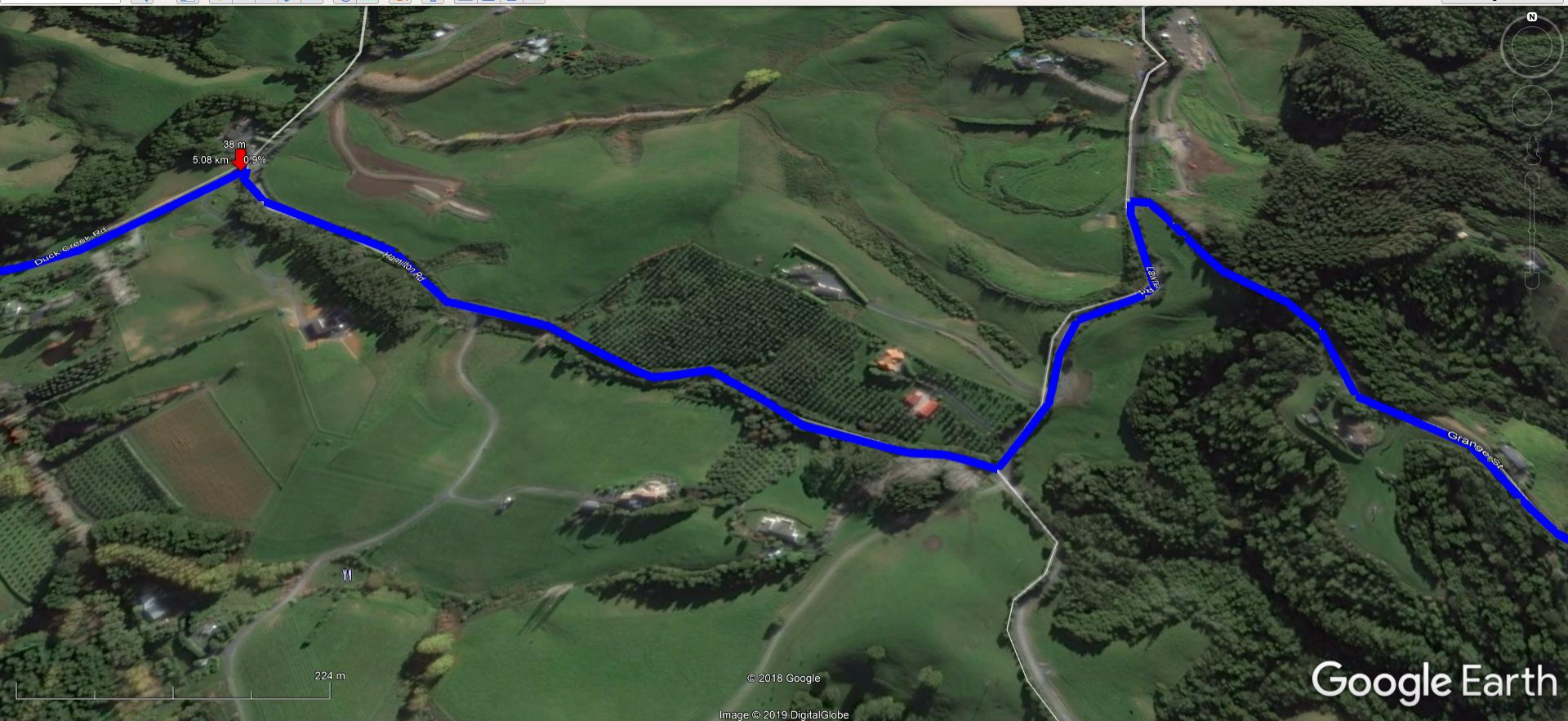
Image © 2019 DigitalGlobe

Graph: Min, Avg, Max: Elevation: 0, 29, 88 m

Range Totals: Distance: 8.43 km | Elev Gain/Loss: 269 m, -270 m | Max Slope: 21.7%, -33.3% | Avg Slope: 5.4%, -5.9%





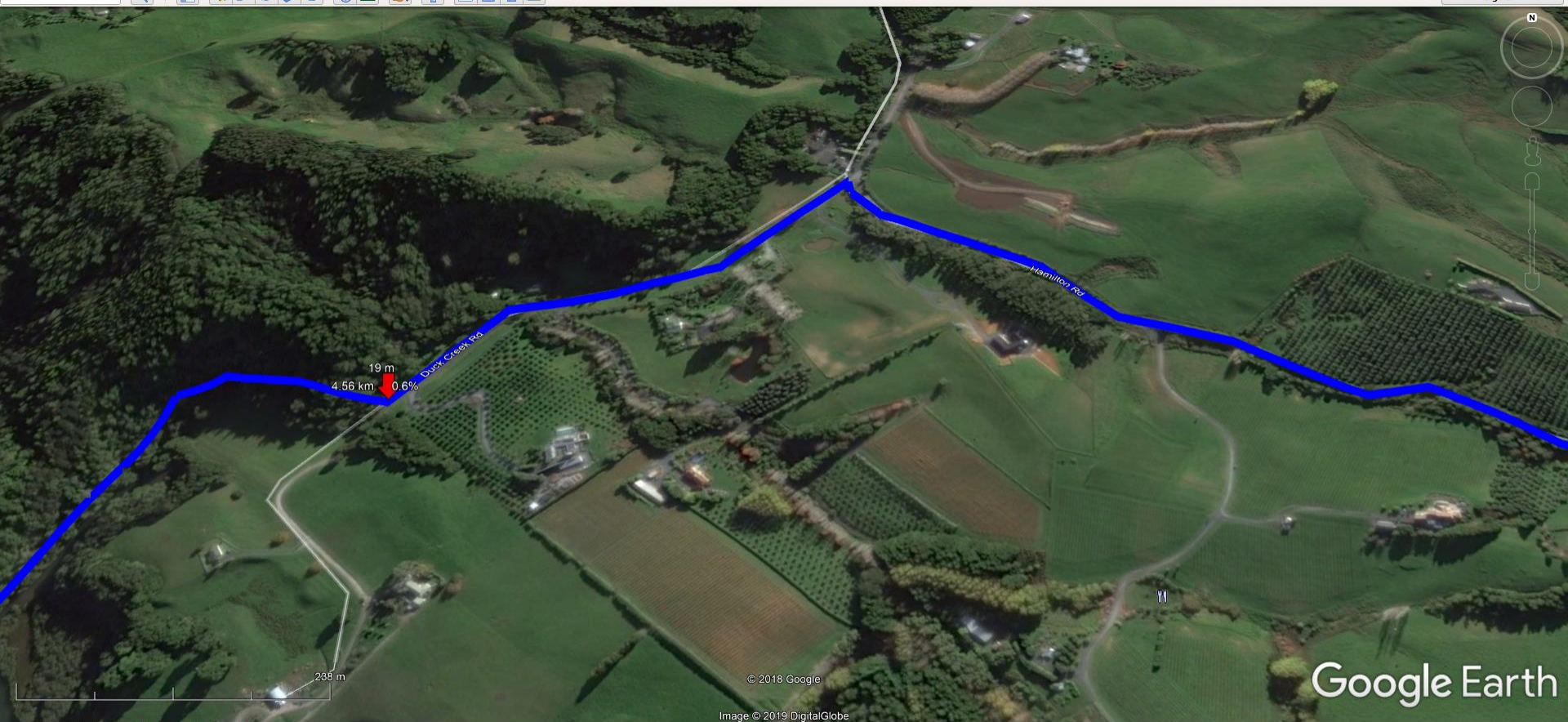


Graph: Min, Avg, Max: Elevation: 0, 29, 88 m

Range Totals: Distance: 8.43 km | Elev Gain/Loss: 269 m, -270 m | Max Slope: 21.7%, -33.3% | Avg Slope: 5.4%, -5.9%







Graph: Min, Avg, Max: Elevation: 0, 29, 88 m

Range Totals: Distance: 8.43 km Elev Gain/Loss: 269 m -270 m Max Slope: 21.7% -33.3% Avg Slope: 5.4% -5.9%







Graph: Min, Avg, Max: Elevation: 0, 29, 88 m

Range Totals: Distance: 8.43 km | Elev Gain/Loss: 269 m, -270 m | Max Slope: 21.7%, -33.3% | Avg Slope: 5.4%, -5.9%







Graph: Min, Avg, Max: Elevation: 0, 29, 88 m

Range Totals: Distance: 8.43 km | Elev Gain/Loss: 269 m, -270 m | Max Slope: 21.7%, -33.3% | Avg Slope: 5.4%, -5.9%







© 2018 Google

Image © 2019 DigitalGlobe

Google Earth

Graph: Min, Avg, Max Elevation: 0, 29, 88 m

Range Totals: Distance: 8.43 km Elev Gain/Loss: 269 m -270 m Max Slope: 21.7% -33.3% Avg Slope: 5.4% -5.9%







© 2018 Google

Image © 2019 DigitalGlobe

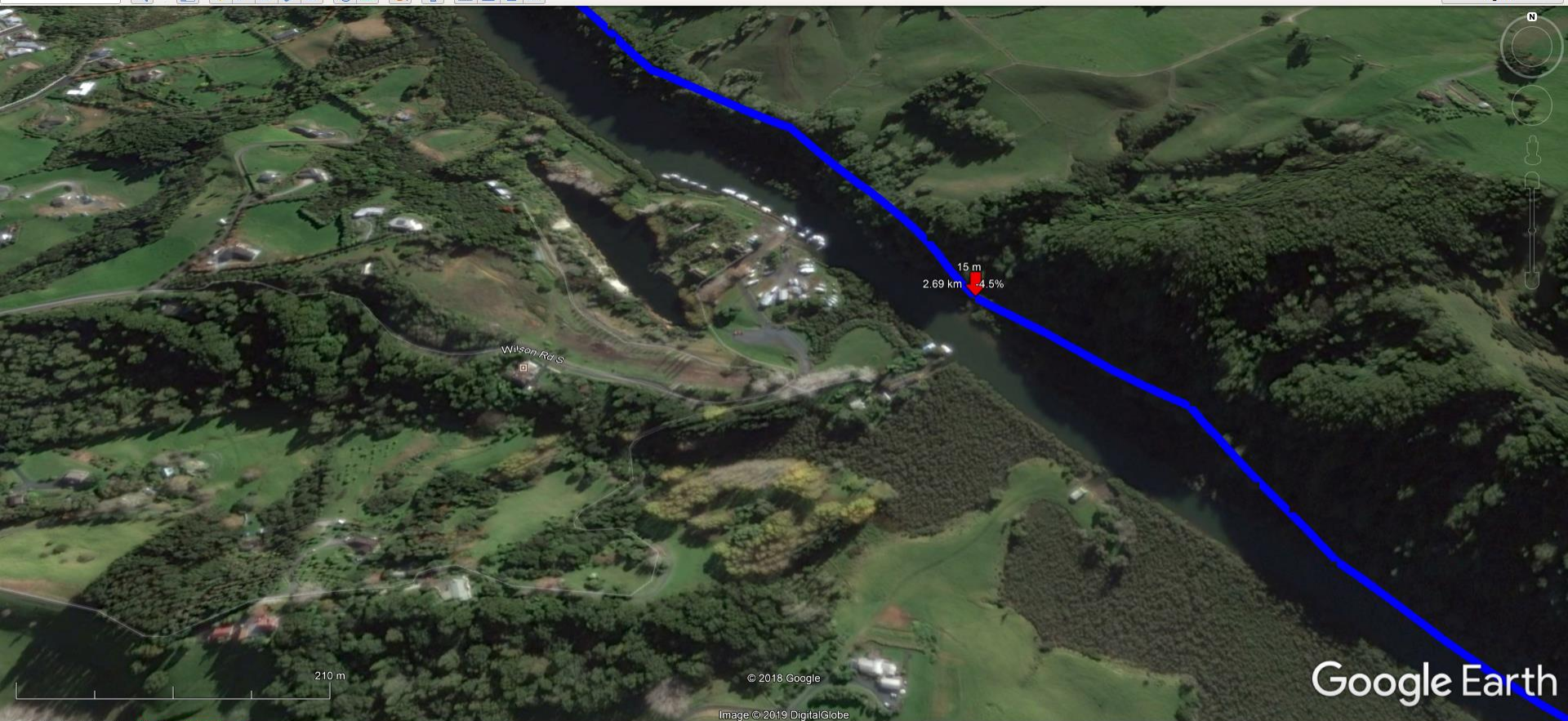
Google Earth

Graph: Min, Avg, Max: Elevation: 0, 29, 88 m

Range Totals: Distance: 8.43 km Elev Gain/Loss: 269 m -270 m Max Slope: 21.7% -33.3% Avg Slope: 5.4% -5.9%







Graph: Min, Avg, Max: Elevation: 0, 29, 88 m

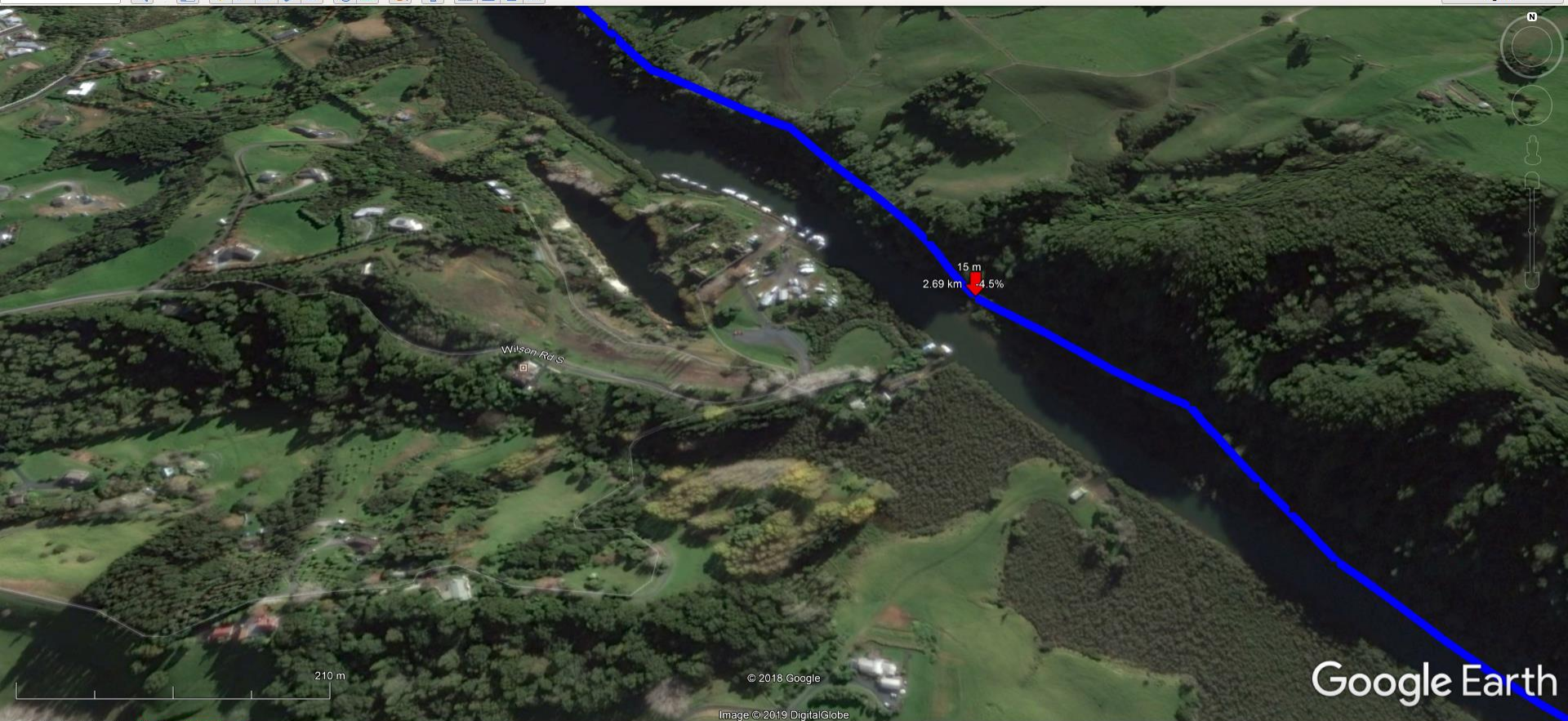
Range Totals: Distance: 8.43 km | Elev Gain/Loss: 269 m, -270 m | Max Slope: 21.7%, -33.3% | Avg Slope: 5.4%, -5.9%











Graph: Min, Avg, Max: Elevation: 0, 29, 88 m

Range Totals: Distance: 8.43 km | Elev Gain/Loss: 269 m, -270 m | Max Slope: 21.7%, -33.3% | Avg Slope: 5.4%, -5.9%







Graph: Min, Avg, Max: Elevation: 0, 29, 88 m

Range Totals: Distance: 8.43 km Elev Gain/Loss: 269 m, -270 m Max Slope: 21.7%, -33.3% Avg Slope: 5.4%, -5.9%







Range Totals:	Distance: 8.43 km	Elev Gain/Loss: 269 m, -270 m	Max Slope: 21.7%, -33.3%	Avg Slope: 5.4%, -5.9%
---------------	-------------------	-------------------------------	--------------------------	------------------------







Track concealed from view

13m Bridge

Historic Lime Kilns

13m Bridge

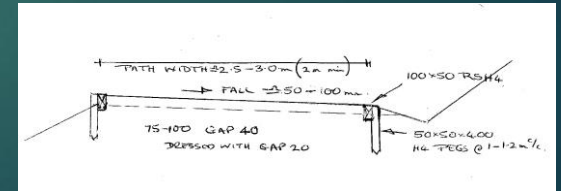
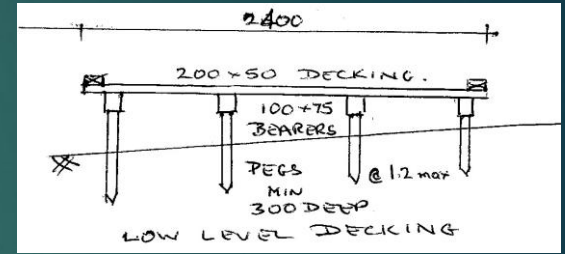
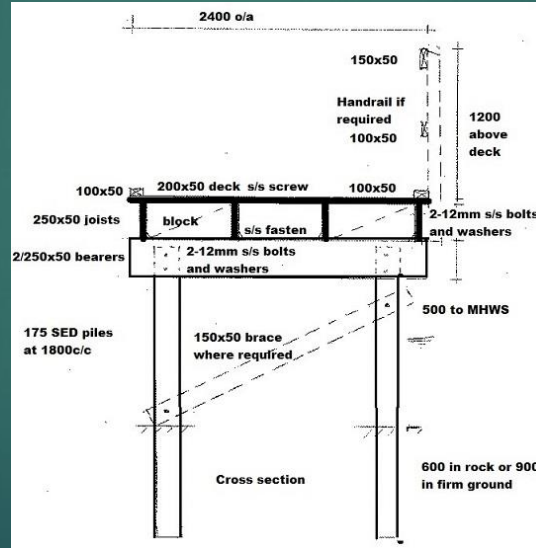
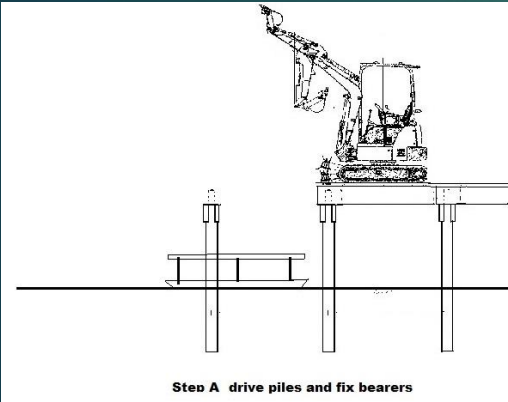
Boardwalk







# Construction



# Environmental

- ▶ Minimum earthworks using small excavator (less than 3 tonnes).
- ▶ Trees no greater than 300mm dia to be removed.
- ▶ Tracks away from kauri except in 2 locations where boardwalks will be used.
- ▶ Improve the quality of the Puhinui Reserve and the River Bank by allowing access for weed removal, native planting, rubbish removal and to allow pest management



# Progress to date

- ▶ FRAME reports 2009 and 2016
- ▶ Recognised as a priority in RLB Greenways Plan
- ▶ Landowners supportive
- ▶ Construction Feasibility Report Prepared
- ▶ Executive Summary
- ▶ Route checked on site.

# Next Stage

- ▶ Public Consultation
- ▶ Finalise Planning inputs
- ▶ Planning and Consent applications



# Questions?

GARY HEAVEN

MOB: 021 896698

EMAIL: [GHEAVEN42@GMAIL.COM](mailto:GHEAVEN42@GMAIL.COM)