

Minutes Bi-Monthly meeting

Snells Beach Ratepayers and Residents Association. SBRRRA

Date: Monday 4th Nov 2024 **Time:** 7.30pm **Location:** Snells Beach School Hall

Present: David Burt, Eileen O'Loan, Alana Van Boheemen, Megan Young, Chris M, Meg Eriksen, Chris Charles+ 20 people

Apologies: Greg Sayers,+ 12 apologies – as noted in the Meeting Attendance register

Resignation: David tabled that the committee has accepted the resignation of Peter Beekman from SBRRRA due to family circumstances. We thank Peter for the many years he has volunteered his time and expertise to our community. He has previously been a committee member, Chairman and more recently the treasurer.

Confirmation of previous minutes 2nd Sept 2024 Hugh Briggs / Liz Duhs

Matters/Actions arising from 2nd Sept 2024 minutes:

Mahu East Pedestrian crossing:

- David raised this once more with RLB at the latest RLB community meeting.
- Similar requests for pedestrian crossings from Leigh and Whangateau communities
- From the Mahurangi Matters we see that this may be a possibility sooner rather than later.
- Eileen to ask RLB for an update

Goodhall Reserve Skatepark.

- Eileen contacted RLB re the promised upgrade to the Skatepark .
- Plans were received from Geoffrey Pitman (AC RLB Area operations manager)–These were circulated via email to members.
- Works scheduled to commence in the 2025 financial year
- SBRRRA is arranging to have a meeting with Geoffrey – re this upgrade and the Te Whau Reserve

Freedom Camping: Kohiki Lane

- Eileen logged a job with AC Asking to speak with compliance team . no replies before she went on holiday. Eileen to continue to follow up.
- **Q:** What is the process for our community to report their concerns? Are we able to ask for regular visits from the compliance officers to monitor the freedom camping sites?
- Compliance issue raised with RLB at Engagement Meeting on 9 October.

Watercare –stormwater pipes safety barriers removed on Te Whau walkway.

- Watercare was contacted – remediation and re-installation of the safety barriers actioned. Email response sent out to members
- The response from Watercare was immediate – temporary barriers were put up immediately – full remediation done by the end of the week.

Bacon Shack: A letter of support was given to management. However, it seems this business has now closed. We have received no word from the management

Mahurangi East Library and community building

- From a recent article in the Mahu Matters – the completion of this refurbishment has been pushed out until Feb/March 2025.
- And so – the venue for our next meeting in March 2025 still TBC

WALG public meeting – the future of Warkworth. 16 Sept 2024

- David attended this meeting on behalf of SBRRA.
- Community concern voiced that residential growth is always ahead of the infrastructure planning/provision.
- WALG is to become an INC society – this needs to be done if future court challenges are needed
- WALG meetings are monthly on the first Wed of the month. All welcome. Eileen does pass on the minutes

AC report: Greg Sayers Report received via email.

- The update on Hill Street is that the coalition government, via the Minister of Transport Simeon Brown, have removed the funding to fix the Hill Street intersection. There is no funding for Hill Street in the next 10 years due to that decision. The Minister says the new Matakana Road has reduced the traffic travelling through Hill Street and he has higher priority intersections to now fix.
- Auckland Transport held the view, and strongly lobbied NZTA, that now is the best time to fix Hill Street because the traffic level so low and would mean the least disruption. Traffic counts will only increase as Warkworth's population grows.
- Regarding the Watercare project down the main streets of Warkworth. This is the latest update from Watercare:
 - *To enable growth in north Warkworth, and reduce overflows into the Mahurangi River in wet weather, we need to construct the Warkworth growth servicing wastewater pipeline – a new large-diameter pipeline from the Warkworth Showgrounds to the new Lucy Moore Pump Station as part of the larger Warkworth wastewater scheme.*
 - *In parallel to finalization of the alignment of the northern section of this pipeline, from the showgrounds to the Hill St intersection, we have been investigating options for the southern section through the town centre.*
 - *Our engineers met with engineers representing the One Mahurangi Business Association to discuss the potential routes at a workshop in August.*
 - *Since our workshop we have been continuing to assess the viability of several options for the southern section of the pipeline. One option put forward by the business association was a pipeline situated beneath an elevated walkway along the riverfront. We have since ruled out this option as it was deemed the most challenging to consent and would pose significant environmental risks during delivery.*
 - *We are continuing to investigate the best route and construction methodology, while considering factors including affordability, impact to the community, environmental impact, cultural factors and the long-term operation of the asset.*
 - *One option we are looking at in greater detail is a combination of open-trenching and trenchless construction from the Hill St intersection to the Lucy Moore Pump Station. A trenchless section would need strategically placed launch/reception shafts. A section of Elizabeth St would still need to be trenched due to the required depth of the pipe. We are currently undertaking geotechnical investigations to confirm if this option is viable.*
 - *Earlier this year we made a commitment to the community that we would share the approach we plan to pursue before Christmas. At this stage, we plan to submit a recommendation to our Board of Directors for consideration at their December meeting. If a decision is reached earlier, we will let you know.*
 - *Even after a preferred route and construction methodology is selected, it's likely that design and consenting will take about 12 months. We understand the community will be eager to meet with us and learn more about the likely timeframe and impact. We will share this information as soon as we have it and intend to organise a range of community information sessions and open days for early 2025.*

RLB report: No RLB members attended. No report submitted

Action: Eileen to contact RLB and ask for further details re the pedestrian crossing, and perhaps an update to pass onto the community.

Correspondence: IN/OUT community groups, AC notices, emails to RLB members, Bacon shack support letterhead, WALG minutes,

Financial report: 30 Oct 2024

Opening General funds	\$6,785.25
Opening Camera funds	\$ 664.11
Opening Balance	\$7,449.36 balance as of 30/8/2024
Income	\$75.00 [subscriptions]
Expenditure	\$ 372.20 [Admin expenses]
Closing balance	\$7,152.16 [General = \$6,488.05 + Camera = \$664.11]

Accepted/Approved Marylyn Owens, Troje Botica

New Business:

Draft Shoreline Adaptation Plans for Snells Beach open for public consultation between 15 October and 12 November. Feedback via AK Have Your Say and Social Pinpoint. Eileen will send out the links to the Plan.

Tractorama scheduled for Saturday 30 November 11am on Snells Beach between Ariki and Snells Beach Road

- Organised by Malcolm Webster and a local committee.
- Fundraiser for the Mahurangi East Volunteer Fire Brigade and local Coastguard.
- A fun day for all. Tractor rally, fun events
- Register your tractor \$30 www.tractorama.nz Volunteers to help also needed

Mahurangi Peninsula Community Christmas Event scheduled for Friday 13 December on Snells Beach Reserve. Organised by Kawau Bay Action Group Supported by Algies Bay Residents and Ratepayers and SBRRA. Last day of school. picnic atmosphere, stage, music, bands, food, licenced bar, Santa arriving via Sealegs More details still to come – keep the date free. A fundraiser for SB School

Neighbourhood support: Margaret Faed informed the meeting that there had been a spate of vandalism and burglaries in our area.

- Ring 111 if the event is happening now
- Ring 105 if reporting damage after the event.
- Inform your neighbourhood street co-ordinator – they may know of other incidents and of local home cameras
- The data on the camera at the entrance to SB is able to be accessed by the police. It is a 24/7 camera

Community Roundup: Highfield Reserve and Donkey Society INC (see below)

Guest speakers:

1: Shorebird protection plans for Snells Beach. Megan Young (Senior bio-diversity Advisor) & Chris Moyne (AC Programme Manager Area Operations Rodney)

- Presentation was given outlining the proposed changes to the northern end of the beach walkway.
- The hope is to improve the shorebird habitat at this northern end of our beach.
- Shore birds are an indicator of the overall environmental health of an area. Disturbance, predation and environmental loss of habitat all lead to the diminishment of the local, regional and international bird population.
- Snells Beach has been highly modified over time, however multiple threatened species and hundreds of shorebirds still use the northern end of the beach and it provides an important habitat for roosting and also breeding for the Northern NZ Dotterels. Other

local beaches such as Algies, Scandrett and Martins Bay have shorebirds too, but not the diversity and numbers as at Snells Beach. Over 30 species have been counted at low tide.

- Snells Beach also provides a unique and important opportunity in that people can easily see and learn about these birds and the importance of coastal ecosystems,

What has AC done so far?

- A yearly change to the dog access rules over the summer months
- A temporary fence is erected during the nesting months nesting and the months when the international migrant species are here.
- Supported community initiatives to help promote/preserve the habitat, such as pest animal control, shorebird monitoring and educational events.

Community consultation will be happening Nov/Dec. This will include

- Outline of the proposed changes to the walkway path and picnic area
- The new design plans for the area – incl seating, planting and information panels
- A project specific website and email
- Posters with QR codes for more information
- Articles in Our Auckland and Mahurangi Matters
- Feedback to be given to RLB early next year
- If all goes to plan – construction will occur in the winter months – May/ June 2025

SBRRA will receive copies of the community consultation information and will pass it onto the membership and wider community.

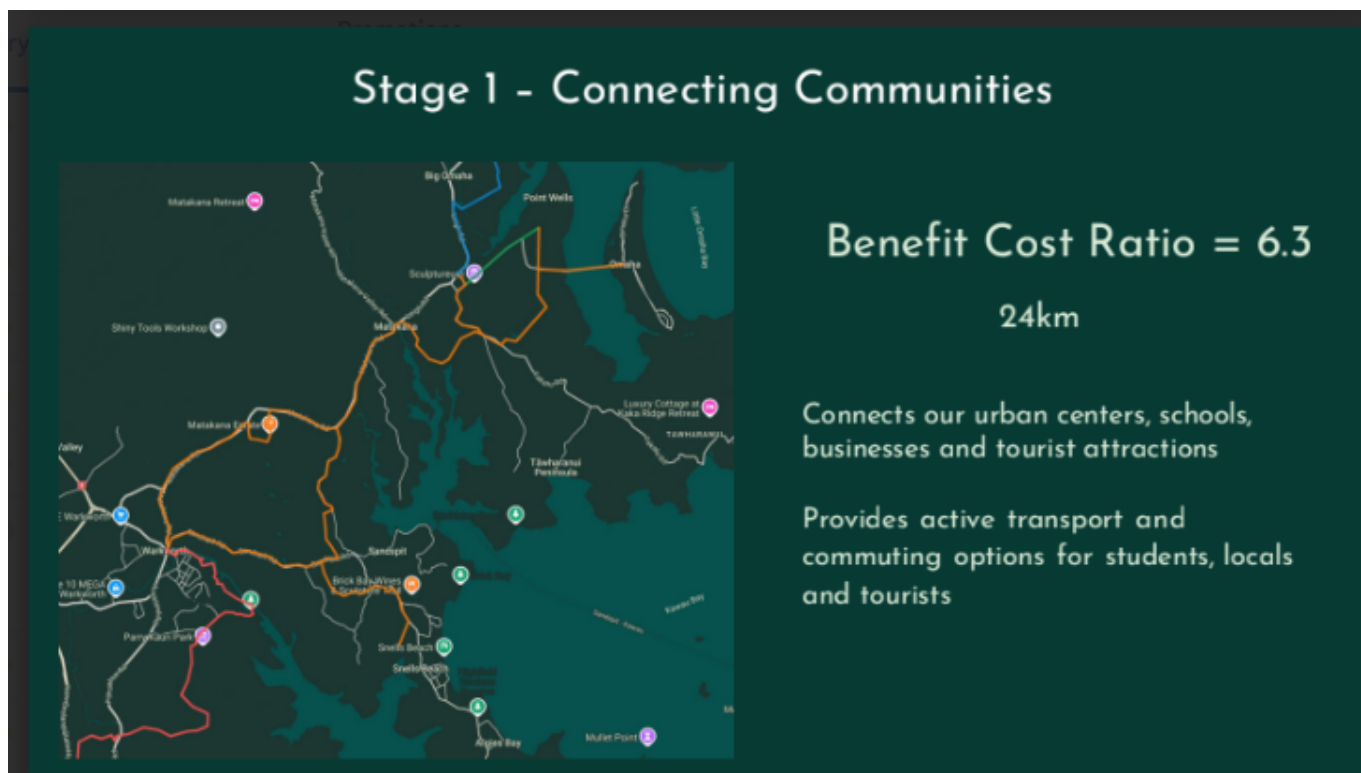
Questions from the floor: Q- how do you manage the dog/cat problem? **A-** Education and awareness is all we can do . There are dog bylaws that we use to manage any dog problems but there is nothing available for pest cat management. There is a AC pest management plan . Megan to send to SBRRA for distribution.

Comment from Alan France – Pestfree ME – traplines are now in place along the foreshore

2: Coastal Trails Trust: the Puhoi to Mangawhai cycle trail. www.thecoastaltrail.co.nz

Meg Eriksen (fundraising and marketing manager) & Chris Charles (AC Programme Manager – Shared Path Project)

- The Coastal Trail is a project managed and lead by the MCTT Matakana Coast Trails Trust.
- Vision - to create a world class recreation and adventure trail that connects our coastal communities – from Puhoi, via Matakana Coast to Mangawhai.
- **Stage 1:** Point Wells to Matakana Country Park – work started this week .2.2 kms. Over 1 million raised from community contributions. Generous locals and local contractors have enabled this stage to proceed. Completion by end of summer.
- **Fundraiser** – In collaboration with Sawmill Brewery – The Trail Raiser Beer promotion. With 4x limited edition brews, 4x limited edition designs, 1,000 units per batch. \$100 per can. The more money raised – the design on the can evolves. The community sees the progress of the fundraising with the different levels achieved on the labels



The Snells Beach connection: within Stage 1 – completing the Grange Street to Muncaster Road connection.

- This will extend the existing trail from Hamatana Rd to Grange St. (Unfortunately closed access until Watercare finishes the project)
- 400m in length. 1 low level boardwalk stream crossing and 2-3 smaller boardwalks/culverts
- Resource consent and AC Landowner approval by end of Nov 2024 hopefully
- Then local community engagement will be sought.
- Construction will be dependent on funding. Construction estimate at present \$170,000 with potential for reductions with community support in construction as shown in the initial stages from Hamatana and on Te Whau Walkway
- **Do we have any generous benefactors within our community on the Mahurangi Peninsula??**
- Acknowledgment is given of the pro-bono support from Hutchinson Consulting Engineering and The Planning Collective.
- Acknowledgement also to Shelley Trotter/ Gary Heaven (Solway Deer Farm) and other local landowners for their continuing support of the vision.

Questions from the Floor:

- **Q** – What is the timeframe for completion of the whole trail. **A:** We are hopeful of a 5 year timeframe – but this depends on grassroots fundraising.
- **Q** – Have you talked with Watercare – there are surplus culverts/ piping etc from the wastewater project. Could these be used? **A:** always open to offers – please get in contact with the Coastal Team.

Eileen does have access to more diagrams – please contact if you would like to see these

Grange to Muncaster diagram.



Meeting closed 9.01pm

Next public meeting: Monday 3rd March 2025 7.30pm Venue – to be advised

Community Roundup

Highfield Reserve & Donkey Society Inc

- **Santa Donkey Day – Sat 7th Dec 11am – 1.30pm**
- **Donkey rides, children's races and games, BBQ**
- **All welcome**